



Animal Welfare



Animal Enrichment:

Stimulation captive animals receive to maintain their health and happiness by encouraging natural behaviors.

Human-Wildlife Conflict: The process through which ecosystems change, forcing people and wildlife to share spaces which are becoming increasingly crowded.

Terms

Animal Welfare: The state of an animal within its living conditions; concerns include day-to-day health & wellbeing as well as survival of species, living conditions, & humane practices in related industries.

Animal Sanctuary: Refers to a safe-haven facility to protect animals for the remainder of their lives (e.g., monkeys post labs) contrasting animal shelters that provide temporary housing.

Animal Research: Refers to any kind of scientific research involving animals; a regulated industry geared to advancing science.

People



The Irwin Family



Jane Goodall



Betty White



Genesis Butler



Bob Barker

Timeline



1866: ASPCA formed.

1966: Animal Welfare Act (AWA) is passed, creating laws covering each “dog, cat, monkey (nonhuman primate mammal), guinea pig, hamster, rabbit, or such other warm-blooded animal.”

1993: General Motors stops using live animals in crash tests.

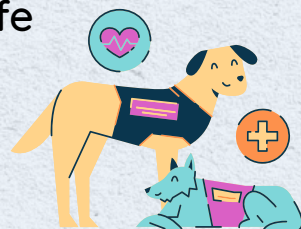
2002: Amendment to the AWA limiting the definition of ‘animal’ to exclude two mammal species of rats and mice to not be subject to USDA inspections. Under the AWA, the USDA has broad rights to inspect labs. Later, additional updating in related laws e.g., the Beagle Freedom Project allowed states to permit adoptions of laboratory animals.

2020: The show Tiger King is released; resulting outrage leads to changes in laws governing exotic animals.

Values

Humaneness
Responsibility
Cruelty-free

Sustainability
Web of Life



Top 10

endangered animals includes various species of the rhino, leopard, tiger, gorilla, orangutan, porpoise, elephant, turtle.

70%

of the search and rescue work during a natural disaster is performed by dogs.

Statistics

16 Million Animals

served in World War I for transportation (horses, camels, donkeys, mules), communication (pigeons, dogs), protection (canaries, dogs, cats), & companionship/morale boosters (dogs, cats, lions, bears, fox, monkeys). Later sea lions & dolphins were trained to detect bombs.

41 Million squirrels estimated to be killed on the road per year.

90% decrease in the distance across the ocean that the Blue Whale’s can communicate w/ each other due to underwater noise pollution by ships & human-made sound.

Action

- Share our infographic.
- Volunteer at local animal welfare shelters -- they need all kinds of experts!
- Learn more about proper handling of invasive species (e.g., the spotted lanternfly).
- Watch documentaries to learn more about animal welfare concerns such as Blackfish, Blue Planet, Sharkwater, & American Scar.
- Commit to one weekly action to raise awareness about animal welfare!



Not for Commercial Use. Share Widely.

© Inform Your Community
www.InformYourCommunity.org